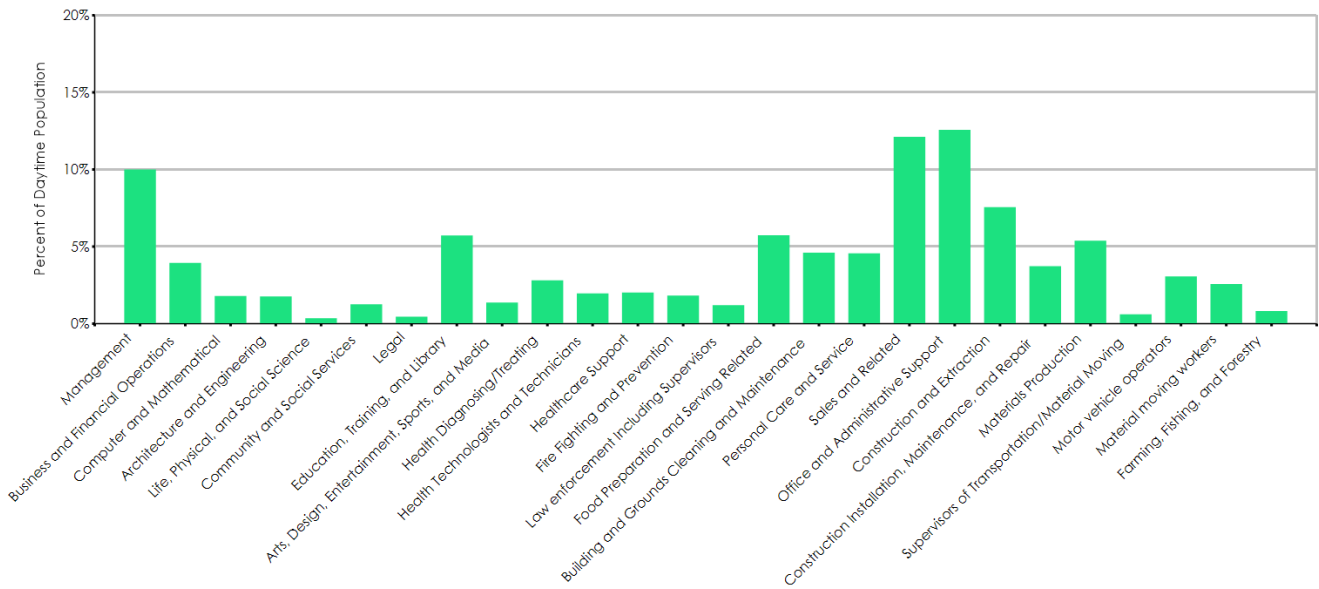


Segment	Count	Percent
Management	18,930	10.0%
Business and Financial Operations	7,469	4.0%
Computer and Mathematical	3,414	1.8%
Architecture and Engineering	3,358	1.8%
Life, Physical, and Social Science	690	0.4%
Community and Social Services	2,380	1.3%
Legal	880	0.5%
Education, Training, and Library	10,824	5.7%
Arts, Design, Entertainment, Sports, and Media	2,605	1.4%
Health Diagnosing/Treating	5,329	2.8%
Health Technologists and Technicians	3,724	2.0%
Healthcare Support	3,820	2.0%
Fire Fighting and Prevention	3,458	1.8%
Law enforcement Including Supervisors	2,280	1.2%
Food Preparation and Serving Related	10,866	5.7%
Building and Grounds Cleaning and Maintenance	8,715	4.6%
Personal Care and Service	8,636	4.6%
Sales and Related	22,917	12.1%
Office and Administrative Support	23,780	12.6%
Construction and Extraction	14,286	7.6%
Construction Installation, Maintenance, and Repair	7,073	3.7%
Materials Production	10,185	5.4%
Supervisors of Transportation/Material Moving	1,165	0.6%
Motor vehicle operators	5,814	3.1%
Material moving workers	4,886	2.6%
Farming, Fishing, and Forestry	1,570	0.8%
Total Employees	189,056	100.0%



Data Source: Dun & Bradstreet Business Table Last Update: December 10, 2021

All estimates, projections or forecasts in this report are subject to errors, including statistical error, error due to the subjective nature of some data, error due to changes in demographics, error based on lagging competitor information or growth data, and error due to factors that are not included in the model. The user assumes all risk of reliance on this information. Powered by Alteryx®.

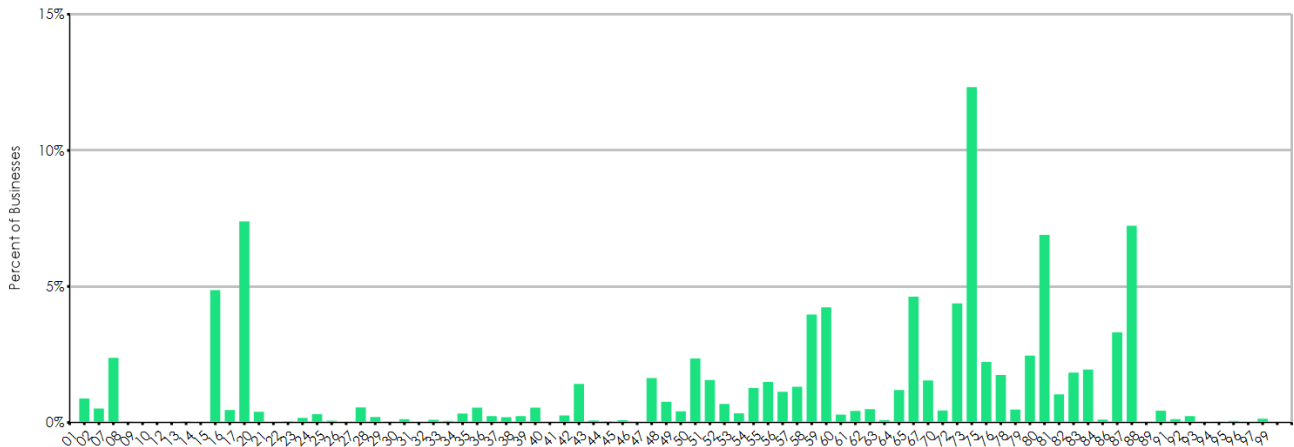
Employee Count	Count of Businesses
0 - 50	34,404
51 - 100	255
101 - 200	141
201 - 300	30
300+	26
Total	34,856

2-Digit SIC	Business Description	0-50 Emp.	51-100 Emp.	101-200 Emp.	201-300 Emp.	300+ Emp.	Total
01	Agricultural Production-Crops	306	1	0	0	0	307
02	Agricultural Production-Livestock	181	0	0	0	0	181
07	Agricultural Services	824	5	0	1	0	830
08	Forestry	12	0	0	0	0	12
09	Fishing, Hunting & Trapping	3	0	0	0	0	3
10	Metal Mining	1	0	0	0	0	1
12	Coal Mining	2	0	0	0	0	2
13	Oil & Gas Extraction	15	0	0	0	0	15
14	Mining & Quarrying-Nonmetallic Minerals	5	0	0	0	0	5
15	Building Construction-Gen Contractors	1,687	5	3	1	0	1,696
16	Heavy Construction Except Building	155	2	2	0	0	159
17	Construction-Special Trade Contractors	2,557	13	4	1	2	2,577
20	Food & Kindred Products Mfrs	131	5	1	0	0	137
21	Tobacco Products Mfrs	1	0	0	0	0	1
22	Textile Mill Products Mfrs	14	0	0	0	0	14
23	Apparel & Other Finished Products Mfrs	60	1	0	0	0	61
24	Lumber & Wood Prods Except Furntr Mfrs	105	1	0	0	0	106
25	Furniture & Fixtures Mfrs	24	1	0	0	0	25
26	Paper & Allied Products Mfrs	6	1	0	0	0	7
27	Printing Publishing & Allied Industries	193	0	0	0	0	193
28	Chemicals & Allied Products Mfrs	67	1	1	0	1	70
29	Petroleum Refining & Related Inds Mfrs	9	0	0	0	1	10
30	Rubber & Miscellaneous Plastics Mfrs	39	3	0	0	0	42
31	Leather & Leather Products Mfrs	8	0	0	0	0	8
32	Stone Clay Glass & Concrete Prods Mfrs	33	1	0	0	0	34
33	Primary Metal Industries Mfrs	21	0	0	0	0	21
34	Fabricated Metal Products Mfrs	110	4	1	0	0	115
35	Industrial & Commercial Machinery Mfrs	185	4	0	0	1	190
36	Electronic & Other Electrical Equip Mfrs	75	3	2	1	0	81
37	Transportation Equipment Mfrs	64	1	3	0	0	68
38	Measuring & Analyzing Instruments Mfrs	79	2	0	1	0	82
39	Miscellaneous Manufacturing Inds Mfrs	189	0	1	0	0	190
40	Railroad Transportation	1	0	0	0	0	1
41	Local/Suburban Transit & Hwy Passenger	91	0	0	0	0	91
42	Motor Freight Transportation/Warehouse	495	1	0	0	0	496
43	United States Postal Service	25	0	2	0	0	27
44	Water Transportation	15	0	0	0	0	15
45	Transportation By Air	27	0	1	0	0	28
46	Pipelines Except Natural Gas	3	0	0	0	0	3
47	Transportation Services	568	1	0	0	0	569
48	Communications	263	3	1	0	0	267
49	Electric Gas & Sanitary Services	135	6	2	0	1	144
50	Wholesale Trade-Durable Goods	814	2	3	1	0	820
51	Wholesale Trade-Nondurable Goods	535	2	6	1	0	544
52	Building Materials & Hardware	228	0	9	0	0	237
53	General Merchandise Stores	104	6	8	1	0	119
54	Food Stores	415	18	5	2	1	441
55	Automotive Dealers & Service Stations	508	8	4	0	0	520
56	Apparel & Accessory Stores	392	2	0	1	0	395
57	Home Furniture & Furnishings Stores	455	3	0	1	0	459

Data Source: Dun & Bradstreet Business Table Last Update: December 10, 2021

All estimates, projections or forecasts in this report are subject to errors, including statistical error, error due to the subjective nature of some data, error due to changes in demographics, error based on lagging competitor information or growth data, and error due to factors that are not included in the model. The user assumes all risk of reliance on this information. Powered by Alteryx®.

2-Digit SIC	Business Description	0-50 Emp.	51-100 Emp.	101-200 Emp.	201-300 Emp.	300+ Emp.	Total
58	Eating & Drinking Places	1,360	17	5	2	1	1,385
59	Miscellaneous Retail	1,474	2	0	1	0	1,477
60	Depository Institutions	101	0	0	0	1	102
61	Nondepository Credit Institutions	149	1	0	0	0	150
62	Security & Commodity Brokers	172	0	0	0	0	172
63	Insurance Carriers	32	1	0	0	0	33
64	Insurance Agents Brokers & Service	414	1	1	0	0	416
65	Real Estate	1,605	6	1	0	0	1,612
67	Holding & Other Investment Offices	539	0	0	0	0	539
70	Hotels Rooming Houses & Camps	151	1	0	1	3	156
72	Personal Services	1,526	0	0	0	0	1,526
73	Business Services	4,284	6	4	1	2	4,297
75	Auto Repair Services & Parking	771	4	0	0	0	775
76	Miscellaneous Repair Services	609	0	0	0	0	609
78	Motion Pictures	163	1	1	1	0	166
79	Amusement & Recreation Services	846	5	4	0	1	856
80	Health Services	2,381	10	7	2	5	2,405
81	Legal Services	361	0	1	0	0	362
82	Educational Services	547	41	43	8	1	640
83	Social Services	670	7	1	0	2	680
84	Museums Art Galleries & Gardens	38	0	0	0	0	38
86	Membership Organizations	1,148	5	2	0	0	1,155
87	Engineering & Accounting & Mgmt Svcs	2,509	6	4	1	0	2,520
88	Private Households	0	0	0	0	0	0
89	Miscellaneous Services Nec	151	0	0	0	0	151
91	Executive, Legislative, & General Govt, Except Finance	29	12	1	0	0	42
92	Justice, Public Order, & Safety	68	11	3	0	0	82
93	Public Finance, Taxation, & Monetary Policy	3	0	0	0	0	3
94	Administration Of Human Resource Programs	10	0	0	0	0	10
95	Administration Of Environmental Quality & Housing Programs	16	5	0	0	1	22
96	Administration Of Economic Programs	5	2	1	0	0	8
97	National Security & International Affairs	37	5	3	1	2	48
99	Nonclassifiable Establishments	0	0	0	0	0	0



Data Source: Dun & Bradstreet Business Table Last Update: December 10, 2021

All estimates, projections or forecasts in this report are subject to errors, including statistical error, error due to the subjective nature of some data, error due to changes in demographics, error based on lagging competitor information or growth data, and error due to factors that are not included in the model. The user assumes all risk of reliance on this information. Powered by Alteryx®.