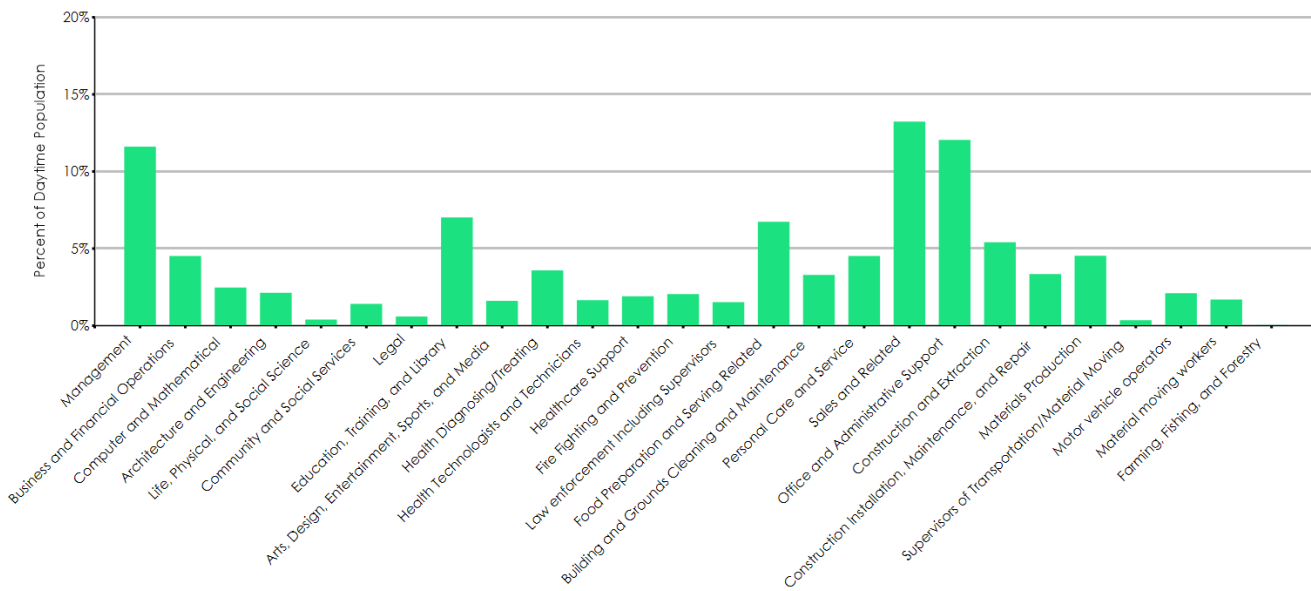


Segment	Count	Percent
Management	8,571	11.6%
Business and Financial Operations	3,341	4.5%
Computer and Mathematical	1,829	2.5%
Architecture and Engineering	1,579	2.1%
Life, Physical, and Social Science	295	0.4%
Community and Social Services	1,046	1.4%
Legal	446	0.6%
Education, Training, and Library	5,181	7.0%
Arts, Design, Entertainment, Sports, and Media	1,192	1.6%
Health Diagnosing/Treating	2,649	3.6%
Health Technologists and Technicians	1,224	1.7%
Healthcare Support	1,413	1.9%
Fire Fighting and Prevention	1,519	2.1%
Law enforcement Including Supervisors	1,126	1.5%
Food Preparation and Serving Related	4,973	6.7%
Building and Grounds Cleaning and Maintenance	2,431	3.3%
Personal Care and Service	3,337	4.5%
Sales and Related	9,768	13.2%
Office and Administrative Support	8,895	12.1%
Construction and Extraction	4,000	5.4%
Construction Installation, Maintenance, and Repair	2,476	3.4%
Materials Production	3,352	4.5%
Supervisors of Transportation/Material Moving	264	0.4%
Motor vehicle operators	1,558	2.1%
Material moving workers	1,260	1.7%
Farming, Fishing, and Forestry	37	0.1%
Total Employees	73,760	100.0%



Data Source: Dun & Bradstreet Business Table Last Update: December 10, 2021

All estimates, projections or forecasts in this report are subject to errors, including statistical error, error due to the subjective nature of some data, error due to changes in demographics, error based on lagging competitor information or growth data, and error due to factors that are not included in the model. The user assumes all risk of reliance on this information. Powered by Alteryx®.

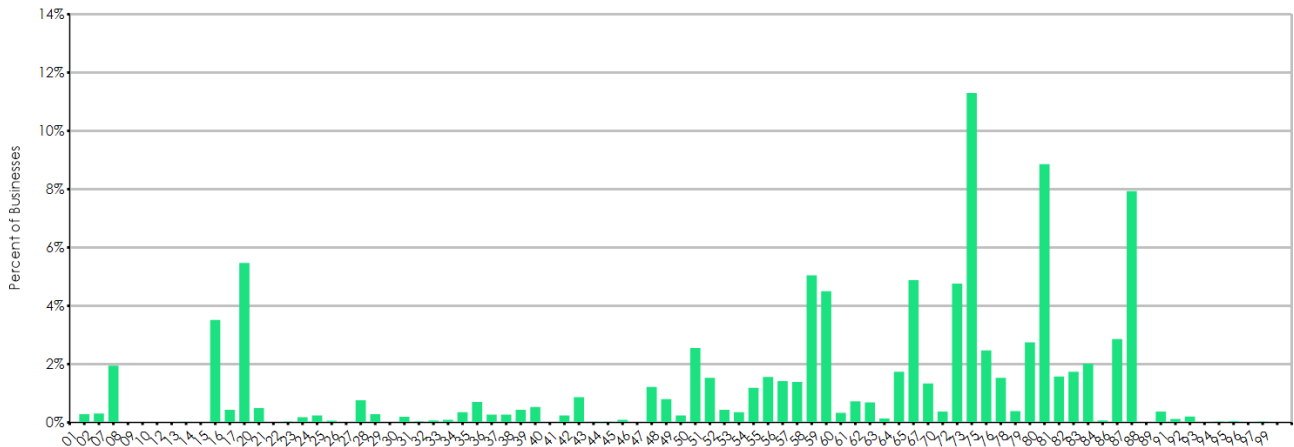
Employee Count	Count of Businesses
0 - 50	12,360
51 - 100	105
101 - 200	58
201 - 300	13
300+	8
Total	12,544

2-Digit SIC	Business Description	0-50 Emp.	51-100 Emp.	101-200 Emp.	201-300 Emp.	300+ Emp.	Total
01	Agricultural Production-Crops	36	0	0	0	0	36
02	Agricultural Production-Livestock	39	0	0	0	0	39
07	Agricultural Services	243	2	0	0	0	245
08	Forestry	2	0	0	0	0	2
09	Fishing, Hunting & Trapping	1	0	0	0	0	1
10	Metal Mining	1	0	0	0	0	1
12	Coal Mining	0	0	0	0	0	0
13	Oil & Gas Extraction	3	0	0	0	0	3
14	Mining & Quarrying-Nonmetallic Minerals	0	0	0	0	0	0
15	Building Construction-Gen Contractors	438	2	1	0	0	441
16	Heavy Construction Except Building	54	0	1	0	0	55
17	Construction-Special Trade Contractors	679	5	2	1	0	687
20	Food & Kindred Products Mfrs	58	4	0	0	0	62
21	Tobacco Products Mfrs	1	0	0	0	0	1
22	Textile Mill Products Mfrs	4	0	0	0	0	4
23	Apparel & Other Finished Products Mfrs	22	1	0	0	0	23
24	Lumber & Wood Prods Except Furntr Mfrs	29	1	0	0	0	30
25	Furniture & Fixtures Mfrs	8	0	0	0	0	8
26	Paper & Allied Products Mfrs	1	1	0	0	0	2
27	Printing Publishing & Allied Industries	96	0	0	0	0	96
28	Chemicals & Allied Products Mfrs	33	1	1	0	1	36
29	Petroleum Refining & Related Inds Mfrs	2	0	0	0	0	2
30	Rubber & Miscellaneous Plastics Mfrs	23	2	0	0	0	25
31	Leather & Leather Products Mfrs	5	0	0	0	0	5
32	Stone Clay Glass & Concrete Prods Mfrs	9	0	0	0	0	9
33	Primary Metal Industries Mfrs	12	0	0	0	0	12
34	Fabricated Metal Products Mfrs	43	1	0	0	0	44
35	Industrial & Commercial Machinery Mfrs	84	3	0	0	1	88
36	Electronic & Other Electrical Equip Mfrs	31	0	2	1	0	34
37	Transportation Equipment Mfrs	31	1	2	0	0	34
38	Measuring & Analyzing Instruments Mfrs	55	0	0	0	0	55
39	Miscellaneous Manufacturing Inds Mfrs	66	0	1	0	0	67
40	Railroad Transportation	0	0	0	0	0	0
41	Local/Suburban Transit & Hwy Passenger	30	0	0	0	0	30
42	Motor Freight Transportation/Warehouse	109	0	0	0	0	109
43	United States Postal Service	3	0	0	0	0	3
44	Water Transportation	3	0	0	0	0	3
45	Transportation By Air	12	0	0	0	0	12
46	Pipelines Except Natural Gas	0	0	0	0	0	0
47	Transportation Services	152	1	0	0	0	153
48	Communications	100	1	0	0	0	101
49	Electric Gas & Sanitary Services	29	0	1	0	0	30
50	Wholesale Trade-Durable Goods	317	2	1	1	0	321
51	Wholesale Trade-Nondurable Goods	187	2	2	1	0	192
52	Building Materials & Hardware	52	0	3	0	0	55
53	General Merchandise Stores	35	3	5	1	0	44
54	Food Stores	142	5	2	0	0	149
55	Automotive Dealers & Service Stations	188	5	3	0	0	196
56	Apparel & Accessory Stores	175	2	0	1	0	178
57	Home Furniture & Furnishings Stores	173	1	0	1	0	175

Data Source: Dun & Bradstreet Business Table Last Update: December 10, 2021

All estimates, projections or forecasts in this report are subject to errors, including statistical error, error due to the subjective nature of some data, error due to changes in demographics, error based on lagging competitor information or growth data, and error due to factors that are not included in the model. The user assumes all risk of reliance on this information. Powered by Alteryx®.

2-Digit SIC	Business Description	0-50 Emp.	51-100 Emp.	101-200 Emp.	201-300 Emp.	300+ Emp.	Total
58	Eating & Drinking Places	614	14	3	1	1	633
59	Miscellaneous Retail	564	1	0	0	0	565
60	Depository Institutions	42	0	0	0	0	42
61	Nondepository Credit Institutions	91	0	0	0	0	91
62	Security & Commodity Brokers	87	0	0	0	0	87
63	Insurance Carriers	16	1	0	0	0	17
64	Insurance Agents Brokers & Service	218	1	0	0	0	219
65	Real Estate	610	2	1	0	0	613
67	Holding & Other Investment Offices	168	0	0	0	0	168
70	Hotels Rooming Houses & Camps	47	0	0	0	0	47
72	Personal Services	598	0	0	0	0	598
73	Business Services	1,411	2	3	1	1	1,418
75	Auto Repair Services & Parking	307	3	0	0	0	310
76	Miscellaneous Repair Services	192	0	0	0	0	192
78	Motion Pictures	46	1	1	1	0	49
79	Amusement & Recreation Services	343	1	0	0	1	345
80	Health Services	1,106	2	2	0	2	1,112
81	Legal Services	197	0	1	0	0	198
82	Educational Services	188	14	13	3	1	219
83	Social Services	250	3	0	0	0	253
84	Museums Art Galleries & Gardens	9	0	0	0	0	9
86	Membership Organizations	355	2	2	0	0	359
87	Engineering & Accounting & Mgmt Svcs	994	1	1	0	0	996
88	Private Households	0	0	0	0	0	0
89	Miscellaneous Services Nec	47	0	0	0	0	47
91	Executive, Legislative, & General Govt, Except Finance	11	4	0	0	0	15
92	Justice, Public Order, & Safety	18	5	3	0	0	26
93	Public Finance, Taxation, & Monetary Policy	2	0	0	0	0	2
94	Administration Of Human Resource Programs	4	0	0	0	0	4
95	Administration Of Environmental Quality & Housing Programs	4	2	0	0	0	6
96	Administration Of Economic Programs	2	0	0	0	0	2
97	National Security & International Affairs	3	0	1	0	0	4
99	Nonclassifiable Establishments	0	0	0	0	0	0



Data Source: Dun & Bradstreet Business Table Last Update: December 10, 2021

All estimates, projections or forecasts in this report are subject to errors, including statistical error, error due to the subjective nature of some data, error due to changes in demographics, error based on lagging competitor information or growth data, and error due to factors that are not included in the model. The user assumes all risk of reliance on this information. Powered by Alteryx®.